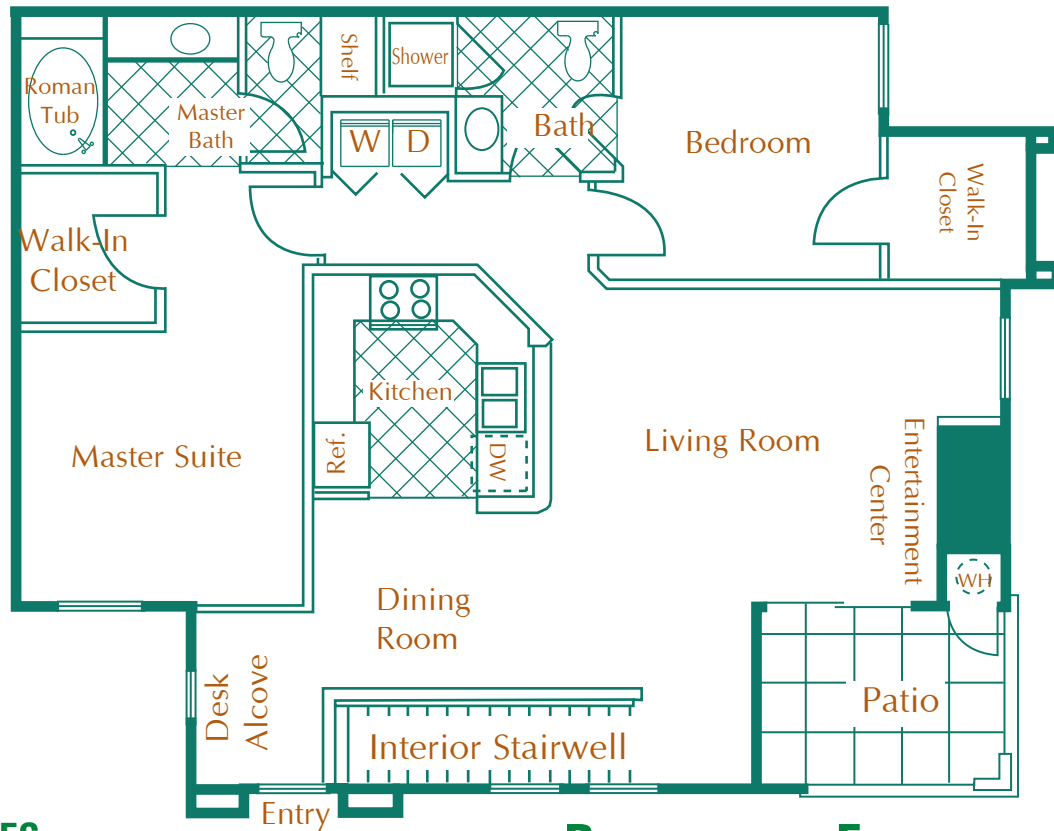


**2 Bedroom 2 Bath**  
**second floor - interior stairwell**

**1,262 Square Feet**

**Starting at \$980**



## INTERIOR FEATURES

- 1, 2 AND 3 BEDROOM APARTMENT HOMES
- 2 & 3 BEDROOM TOWNHOMES
- 2-CAR DIRECT ACCESS GARAGE WITH REMOTE
- FULLY APPOINTED KITCHEN
- CERAMIC TILE FLOORING
- BUILT-IN ENTERTAINMENT CENTER IN SELECT FLOOR PLANS
- CATHEDRAL CEILINGS IN SELECT FLOOR PLANS
- UTILITY ROOM WITH FULL-SIZE WASHER AND DRYER
- SPACIOUS ROMAN TUB
- WALK-IN CLOSETS WITH BUILT-IN SHELVING
- PANORAMIC RED ROCK MOUNTAIN AND CITY VIEWS

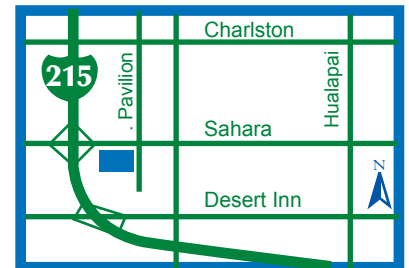
## RECREATIONAL FEATURES

- AUTOMATED GATE ACCESS
- LUXURIOUS GRAND SALON
- BILLIARD ROOM
- MEDIA ROOM WITH GAME TABLE
- FITNESS CENTER WITH NAUTILUS EQUIPMENT
- TWO LARGE RESORT-STYLE POOLS
- TWO RELAXING SPAS
- GAZEBO AREAS WITH BARBECUES
- SPORTS COURT
- TENNIS COURT

## APPROVED PETS WELCOME

MON-FRI: 8AM-6PM  
 SAT & SUN: 8AM-6PM

PRICES SUBJECT TO CHANGE WITHOUT NOTICE



**WILLOWBROOK**  
 2601 SOUTH PAVILION CENTER DRIVE  
 LAS VEGAS, NV 89135

PHONE: 702.256.1872  
 FAX: 702.256.4936

[WWW.WILLOWBROOK-APARTMENTS.COM](http://WWW.WILLOWBROOK-APARTMENTS.COM)